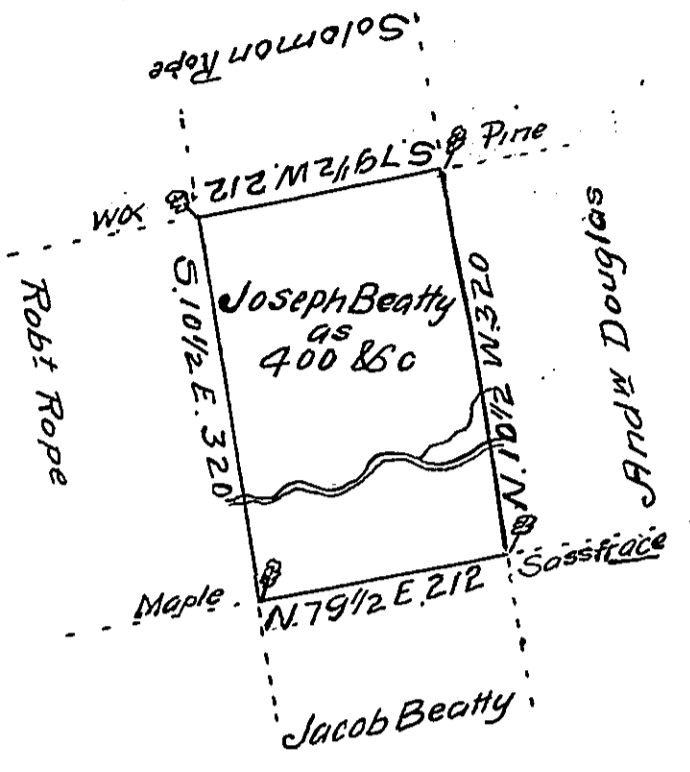


Hazle
Luzerne



A Draft of a tract of Land called _____ situate on the waters of
 Catawissey Creek in the County of Northum^d containing four hun-
 dred acres & allow^e

Surv^d for Joseph Beatty the 3^d day of October 1793 by virtue of
 a warrant dated the 13th day of June 1793

by W^m Gray D.S.

To Daniel Broadhead Esq^r }
 Surv^r. Gen^l. }

IN TESTIMONY that the above is a copy of the original remaining on file in
 the Department of Internal Affairs of Pennsylvania, made
 conformably to an Act of Assembly approved the 16th day of
 February, 1833, I have hereunto set my Hand and caused
 the Seal of said Department to be affixed at Harrisburg,
 this eighth day of October 1911

Henry Howell
 Secretary of Internal Affairs.